

VAE CONTROLS GROUP

TAMAS® Lite

Software

for Loading Terminals Administration

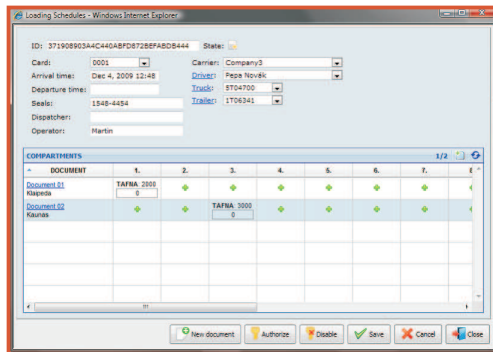
VAE
CONTROLS

Features

- Data import through OPC DA 2.0
- Drivers identification by entering unique code into presets
- Allows later upgrade to full **TAMAS®** to manage entire facility automation and administration
- Easy integration with SCADA systems from different vendors
- Easy one-way integration with different plant information systems (for details consult factory)

Limitations:

- **TAMAS® Lite** monitors operation of presets but does not protect them against unauthorized access - operators may load products without any restrictions.
- **TAMAS® Lite** is not suitable for blending control and monitoring.
- **TAMAS® Lite** can be used for additive dosing applications, however, it will not be able to set and to display amount of



TAMAS® Lite is a software for acquisition and administration of loading data. Main functions of the system are import or manual enter of loading schedules, automatic import of transactions data from batchcontrollers, data visualisation, reporting, preparation and print of documents, alarm handling, and database management. **TAMAS® Lite** becomes perfect solution for cost-sensitive applications where automated loading control is not required.

TAMAS® Lite allows quick implementation which requires just installation onto a workstation, setting of communication parameters and link to import loading schedules. On request, customization of printed documents will be made. The system is perfect solution when delivered together with pre-fabricated measuring skids. In this case, we can deliver completely set system with minimum requirements for on-site configuration.

TAMAS® Lite can be interfaced with Microload.net and Accuload III batchcontrollers via Ethernet. The system adopts Web Server/Client architecture which allows installation on one or more workstations. Hardware/software requirements: workstation - personal computer certified for professional usage with Windows XP or higher operating system, and Microsoft Internet Explorer 8 or newer.



ETHERNET



OPTIONAL CLIENTS



SERVER/CLIENT

TAMAS® Lite

VAE CONTROLS GROUP

TAMAS® Lite

Software

for Loading Terminals Administration

Dispatching process and functional description of TAMAS® Lite

A client makes an order for fuel. The order can be inserted into the **TAMAS® Lite** manually through a web form or, optionally, imported from company information system. In this case it is necessary to implement interface for loading schedules data exchange between the enterprise information system and **TAMAS® Lite**.

After an order is in force, specific loading schedules (plans) can be inserted the same way. A loading schedule is a data record containing all information necessary to dispatch one tanker: Driver's data (ID, virtual ID number, name), transport details (carrier, truck and trailer registration numbers or rail tanker numbers, seal numbers, etc.), product and quantity in every compartment, which compartment belongs to which customer and delivery place.

Since a loading schedule is available, a driver may come in dispatching room for check-in. Using informations stored in **TAMAS® Lite**, the dispatching personnel verifies drivers' identity, his authorization to access the loading facility, approvals, training validity etc. Main task is activation of specific loading schedule and to provide the driver with informations necessary for loading - type and quantity of fuel to be loaded into each specific compartment, and unique personal identification number (PIN).

After a loading schedule is activated, the driver is allowed to drive in his truck in a loading bay. There the driver or operator has to prepare for the loading: He must connect grounding monitor/overflow monitor, and connect loading and vapour arm(s), whichever is applicable. The driver must enter the PIN into the preset, set the loading data and start the loading. If technically possible, more compartments can be loaded at the same time.

After the required quantity is loaded into a compartment, loading is automatically stopped and the driver confirms the loaded volume by pressing key on electronic preset device keyboard. At this moment, the transaction data are printed automatically on the BOL printer and imported into the **TAMAS® Lite** database. Thanks to virtual identity and driver's identification by PIN, **TAMAS® Lite** automatically recognizes which transactions belong to which specific driver.

After the loading of all compartments is completed, the driver disconnects the arm(s) and monitor(s), leaves the loading bay and goes into the dispatching room for check-out. The transaction data are saved and delivery notes belonging to the driver are automatically printed by **TAMAS® Lite**. The delivery notes are automatically splitted into more documents according to customers and delivery places in the loading schedule. Following data are typically included in delivery notes: customer name, supplier name, product, quantity, quantity at reference conditions, date and time, driver, tank truck, safety instructions, etc. The scope of the data can be customized but commercial data like prices, taxes etc. cannot be included.

After saving the transaction data, delivery notes can be replicated to the enterprise information system via ODBC data source (data structure available on demand from the supplier). If the information system is not accessible, the data are buffered and replication is executed as soon as the connection is established again.

